



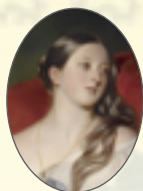
August 14 - 17, 2017

MathQuest

a summer program of the
Department of Mathematics and Statistics



The largest residence at Queen's is named after Queen Victoria who granted Queen's founding royal charter in 1841.



Math Quest in Residence includes 3 nights accommodation in a Residence, breakfasts, lunches and dinners to be enjoyed at different locations across campus. It begins 8:30 am Monday Aug 14 and continues until 4:30 Thursday Aug 17th.

The day camp option runs from 9:30 am until 4:30 pm each day from Monday to Thursday. Campers either bring a packed lunch, or purchase lunch on campus with the group.

Snacks and materials will be provided.

MATH QUEST
215 JEFFERY HALL
QUEEN'S UNIVERSITY
KINGSTON, ON K7L 3N6
613 - 533 - 2432

MATHQUEST@MAST.QUEENSU.CA

FOR MORE INFORMATION AND APPLICATION
FORMS GO TO:

WWW.MATHQUEST.CA

© 2017 Math Quest



tailored to girls
directed by women

3.1415926535897932384626433832795028841971693993751058209749445923078164062

MathQuest

QUEEN'S MATH CAMP FOR GIRLS

is a mathematics camp for high school girls interested in math and science who have curiosity for exploring new ideas. With a focus on problem solving, our hands-on activities are led by female mathematicians, statisticians and physicists.

Puzzles, games, indoor and outdoor activities, in Jeffery Hall's math centre, in the Integrated Learning Centre's computer lab or in the arboretum...We invite you to spend some time on Queen's campus this summer.

Each summer in August, PhD candidates at Queen's University take a break from their research and design activities to explore the adventurous side of mathematics.

Topics covered vary each summer and can include topology, geometry, algebra, cryptography, graph theory, number theory, bio math, computing and statistics.

Math Quest is sponsored by the Canadian Mathematical Society and the Queen's University Department of Mathematics and Statistics.

